



# NHS Work Experience Programme

## BACKGROUND

As part of our health inequalities project, GWR PCN has teamed up with local schools and organizations to give residents a chance to check out some cool NHS work experiences!

But why are we doing this?  
One of our INT priorities were employment and education. We believe education and employment leads to better health outcomes. The NHS is like a big family that employs around 1.6 million people, mixture of clinical and non-clinical roles.

- STAFF INVOLVED
- Doctor
  - Nurse
  - Clinical Pharmacist
  - Physician Associate
  - Paramedic
  - Social Prescriber
  - Dietician
  - Administrator
  - Managers
  - GP Support Team



## HOW IT WORKS

Education and employment leads to better health. We want to give everyone the opportunity to have NHS Work experience. This programme is open to all students/residents across NWL. W worked closely with career leads to organise workshops within schools for year groups 9+.



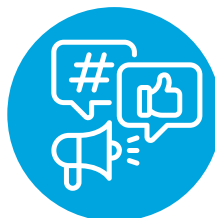
Easy to access



Learn about a variety of roles in the NHS



Get to use medical equipment



Work on a project & get a certificate



CV writing and interview tips



## RESULTS AND FINDINGS



**20 STAFF**  
Including a mixture of PCN and Practice staff.



**10+ SCHOOLS**  
Collaborated with over 10 schools across NWL between Feb 2025 - June 2025



**4000+ STUDENTS**  
Mixture of F2F events and online work experience programmes across NWL



**70 NET PROMOTER SCORE**  
NPS of 70 across patients and staff.



**SOCIAL MEDIA POSTS**  
Produced social media posts across platforms such as TikTok and Youtube.

Benefit	Measure	Data Source	Baseline	Timescale	Target (patients/ views)	Achieved	Needed
<p>Assess the impact the programme has had on 16+ who attended</p> <p><b>Qualitative</b></p>	<p>Provide survey to attendees after the session. Demographics – ethnicity, age and sex. English isn’t first language. Primary reason to join programme, impact on motivation once they have completed the programme.</p>	<p>Survey Monkey</p>	<p>0</p>	<p>15 weeks</p>	<p>NA</p>	<p>NA</p>	<p>NA</p>
<p>Number of students who attended F2F programme</p> <p><b>Quantitative</b></p>	<p>Review number of attendees at each event . We will try and calculate deprivation decile, but may need help with mapping postcodes.</p>	<p>Eventbrite/ F2F registrations/ MS Teams data</p>	<p>0</p>	<p>15 weeks</p>	<p>500</p>	<p>718</p>	<p>-218</p>
<p>Number of students who participated in 3 day online programme</p> <p><b>Quantitative</b></p>	<p>Review number of attendees at each event</p>	<p>Eventbrite/ MS Teams data</p>	<p>0</p>	<p>15 weeks</p>	<p>1500</p>	<p>2310</p>	<p>-810</p>
<p>Number of people who complete asynchronous training (Motimate app – which results in completing modules and a certificate on successful completion).</p> <p><b>Quantitative</b></p>	<p>Review the number of students registered on Motimate app</p>	<p>Motimate data</p>	<p>0</p>	<p>15 weeks</p>	<p>750</p>	<p>1080</p>	<p>-330</p>
<p>Social media analytics</p> <p><b>Quantitative</b></p>	<p>Number of people who follow, engage or share content.</p>	<p>Social media</p>	<p>0</p>	<p>15 weeks</p>	<p>750</p>	<p>223</p>	<p>527</p>
<p>Interest from other INTs in programme</p> <p><b>Productivity</b></p>	<p>Those interested in sharing this programme. Those who would like support running their own programme.</p>	<p>INT involvement</p>	<p>0</p>	<p>15 weeks</p>	<p>NA</p>	<p>NA</p>	<p>NA</p>
					3500	4331	-831